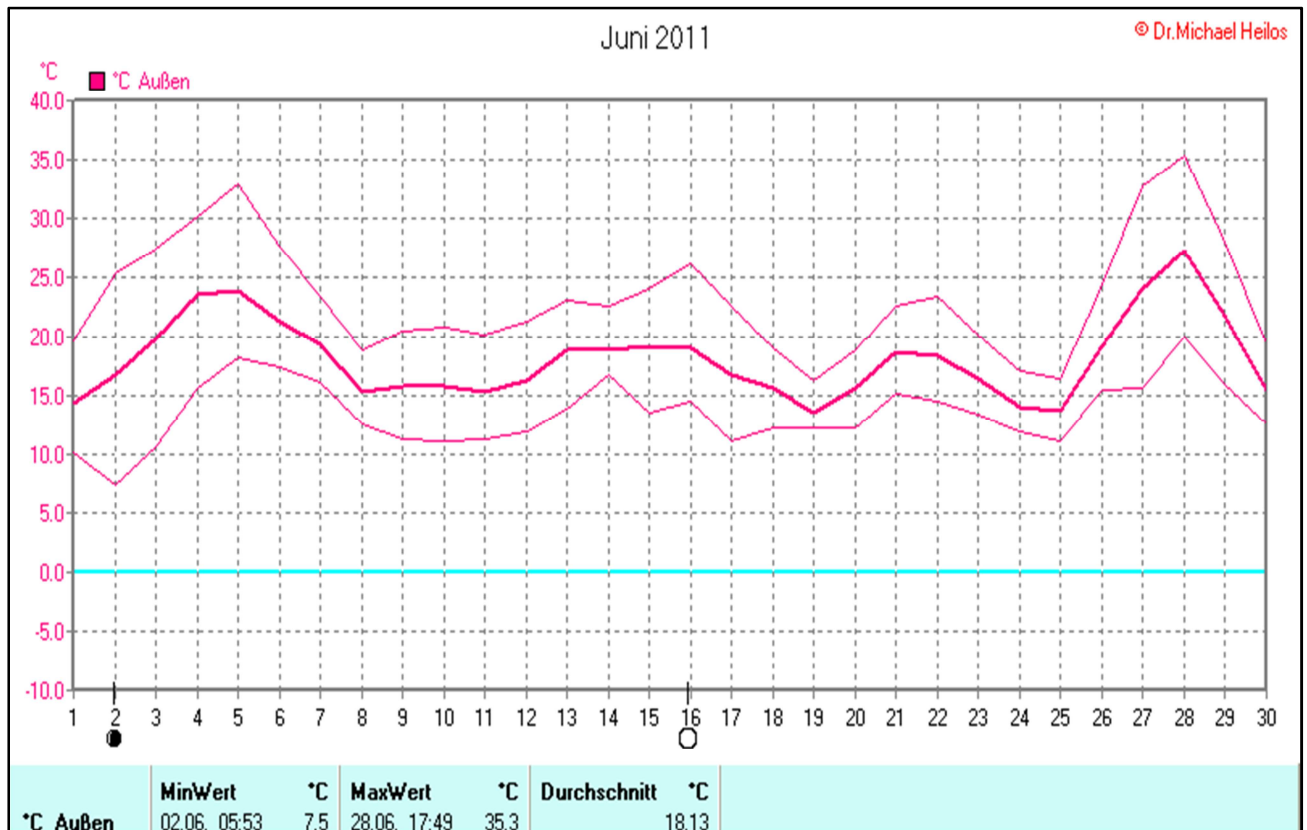
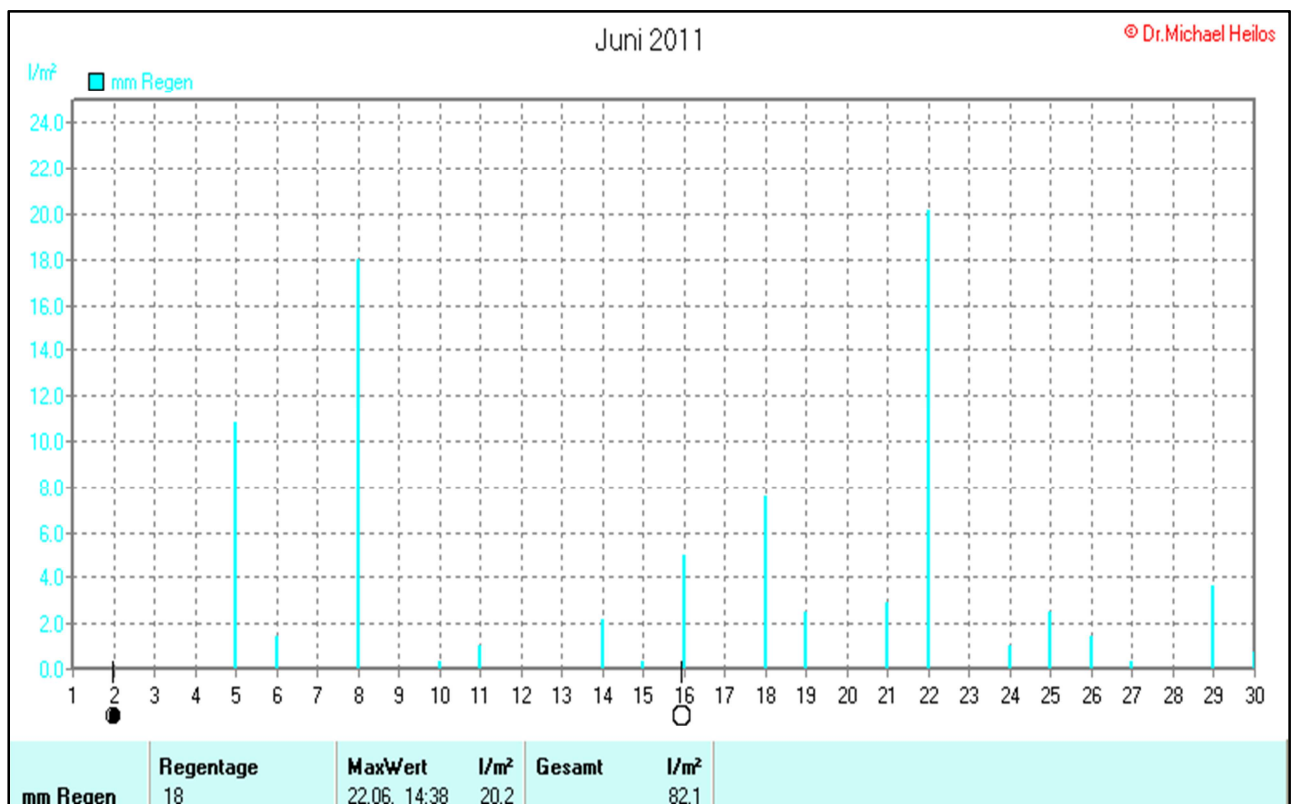
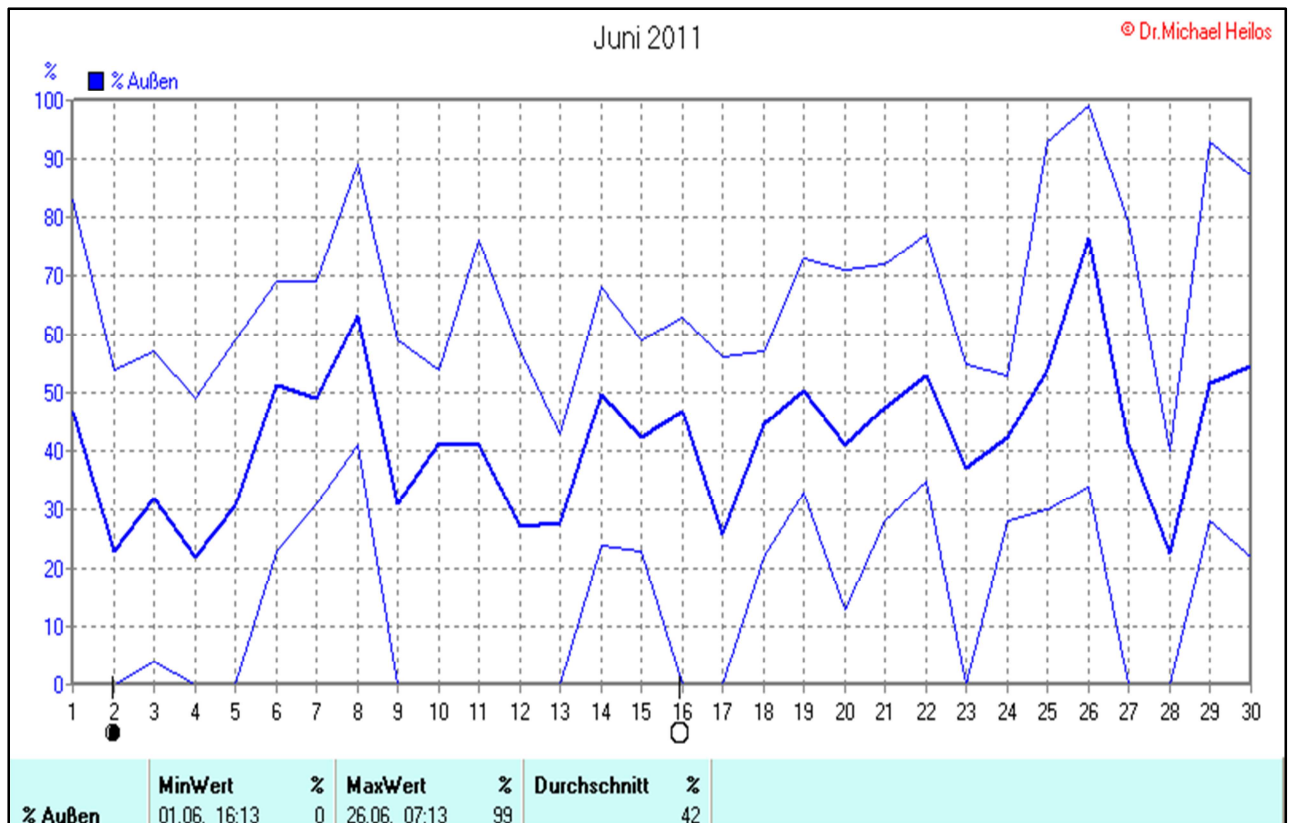
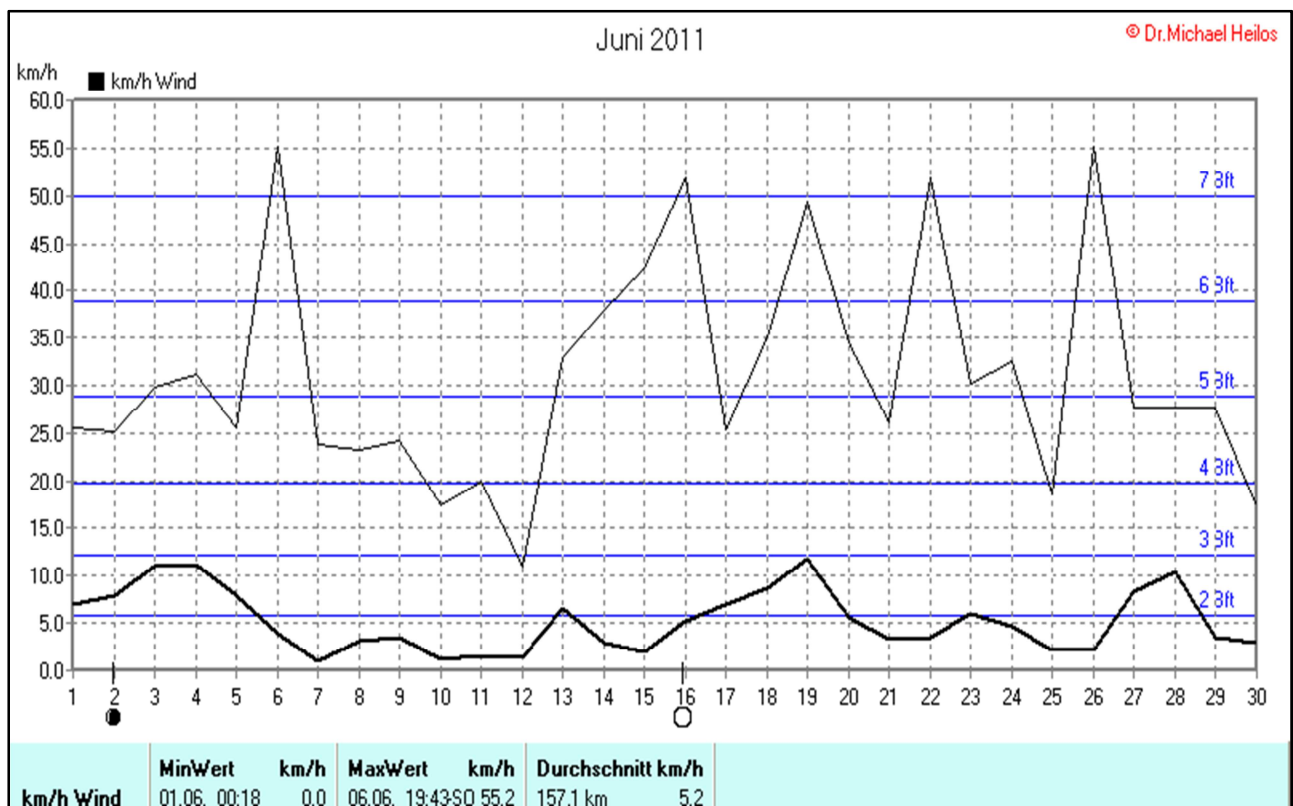
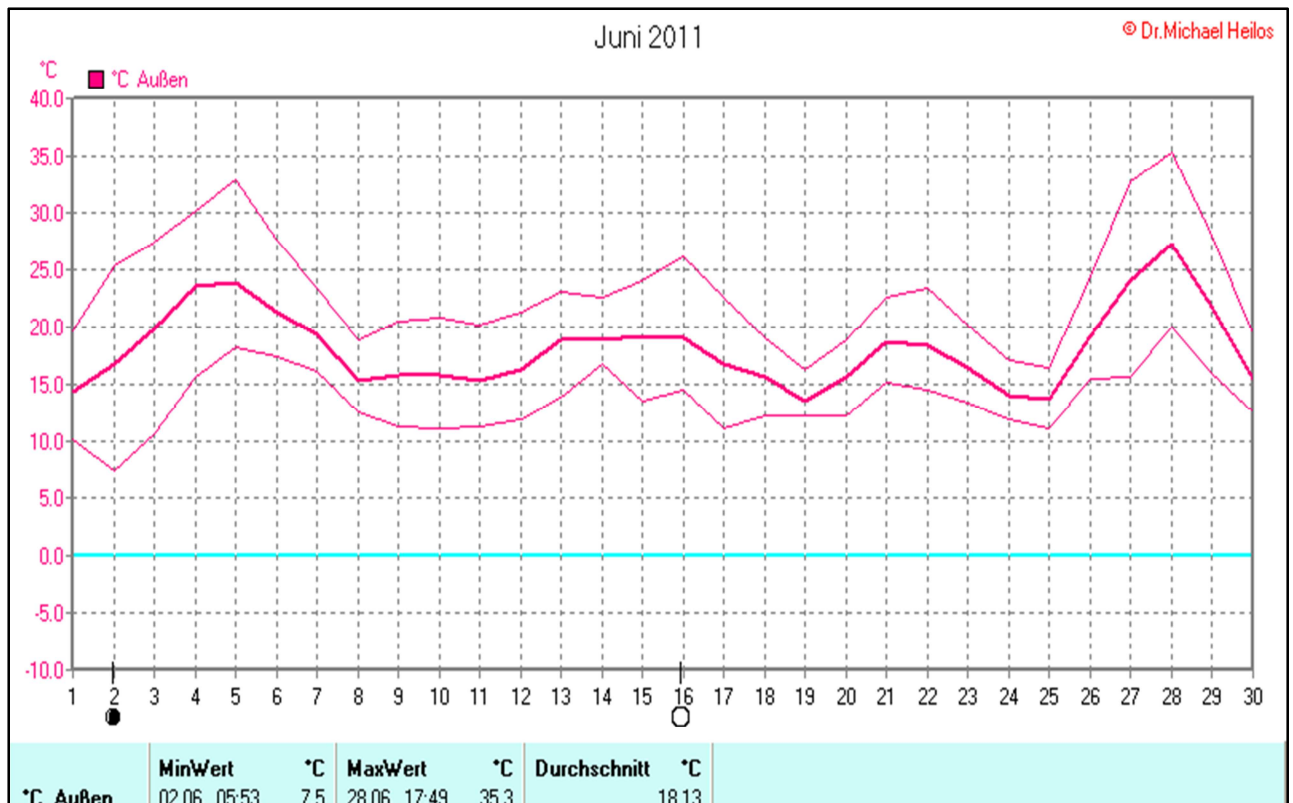


Wettertabelle und Grafiken Juni 2011 Station Borchten

<u>Wetterdaten Juni 2011 Station Borchten</u>							
Meßgröße	Minimum	Zeit	Datum	Maximum	Zeit	Datum	Durchschnitt
Temperatur Außen	7,5 °C	05:53	02.06.2011	35,3 °C	17:49	28.06.2011	18,1 °C
Taupunkt	-60,0 °C	16:13	01.06.2011	18,4 °C	12:13	26.06.2011	-0,6 °C
Windchill	4,2 °C	04:43	24.06.2011	35,3 °C	17:49	28.06.2011	17,5 °C
Luftfeuchte Außen	0%	16:13	01.06.2011	99%	07:13	26.06.2011	42%
Luftdruck	998,6 hPa	03:07	08.06.2011	1030,9 hPa	07:23	02.06.2011	1014,0 hPa
Wind km/h				55,2 km/h	19:43	06.06.2011	5,2 km/h
Windrichtung				O-SO	19:43	06.06.2011	N-NW
Wind Verlauf							#3771,0 km
Regenmenge				20,2 l/m²	14:38	22.06.2011	#82,080 l/m²
Sonne				15,75 h	21:29	13.06.2011	#306:57 h

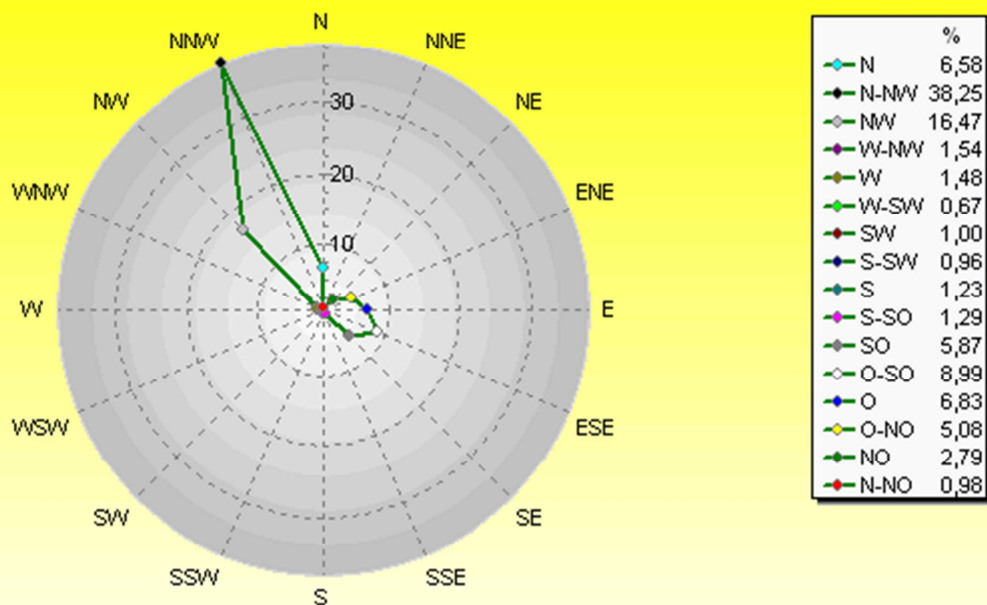






Verteilung Windrichtung Juni 2011

Borchen, Kreis Paderborn

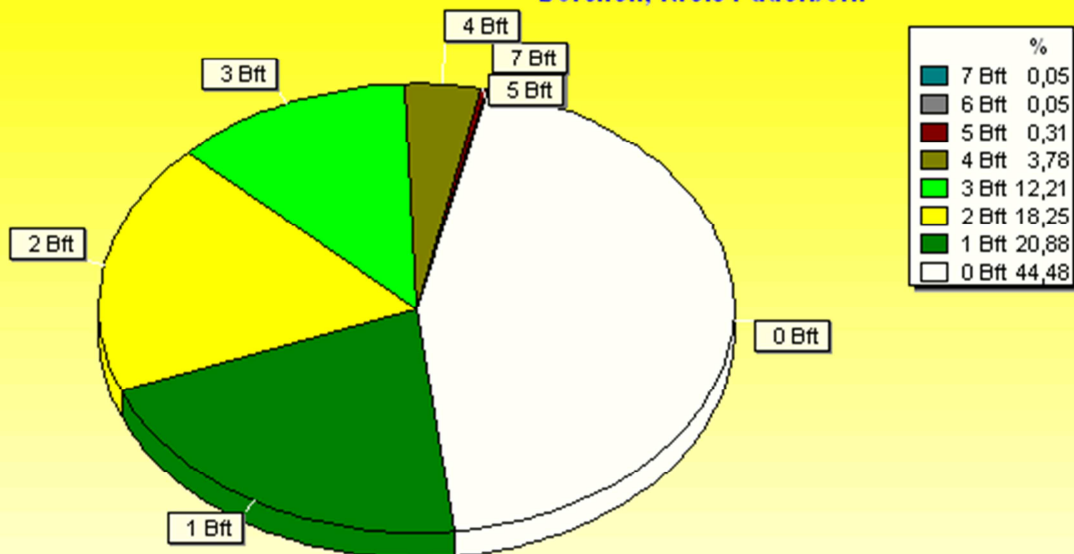


4803 / 3848 Werte -> 44.5% Windstille - Ø 5,2km/h - Max. 55,2km/h - 3771,0 km

© WzWin32 - © Dr.Michael Heilos - Borchen

Verteilung Windstärke Juni 2011

Borchen, Kreis Paderborn



8651 Werte - Ø 5,2km/h - Max. 55,2km/h - 3771,0 km

© WzWin32 - © Dr.Michael Heilos - Borchen

Juni 2011

© Dr. Michael Heilos

