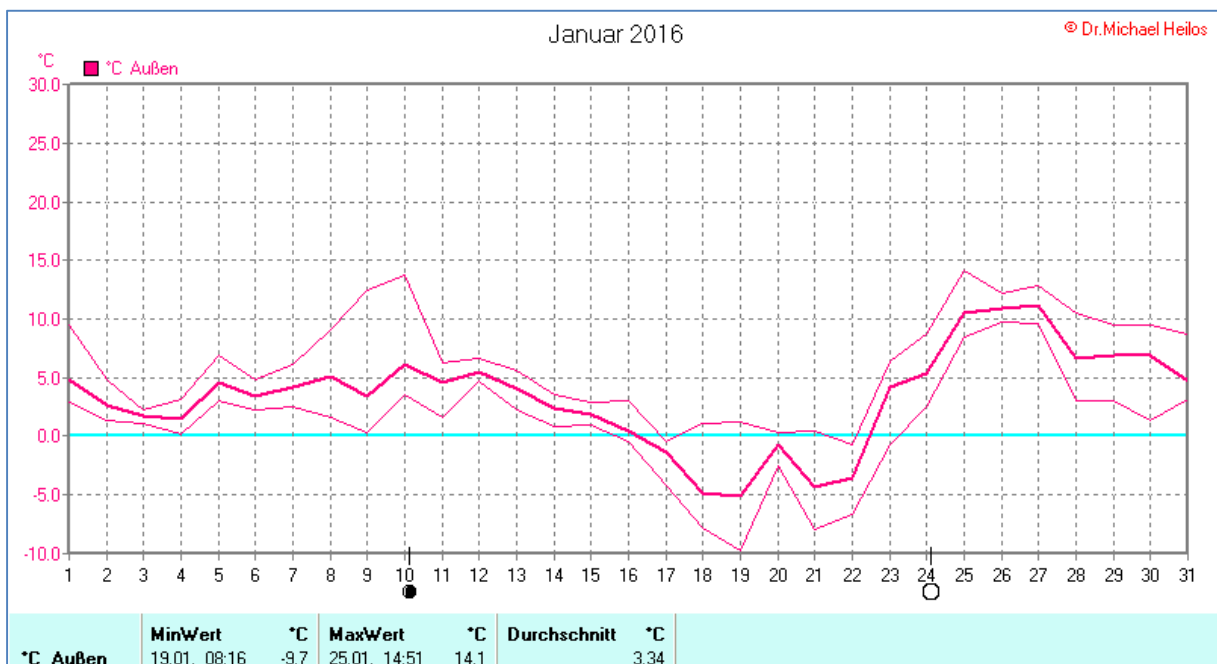
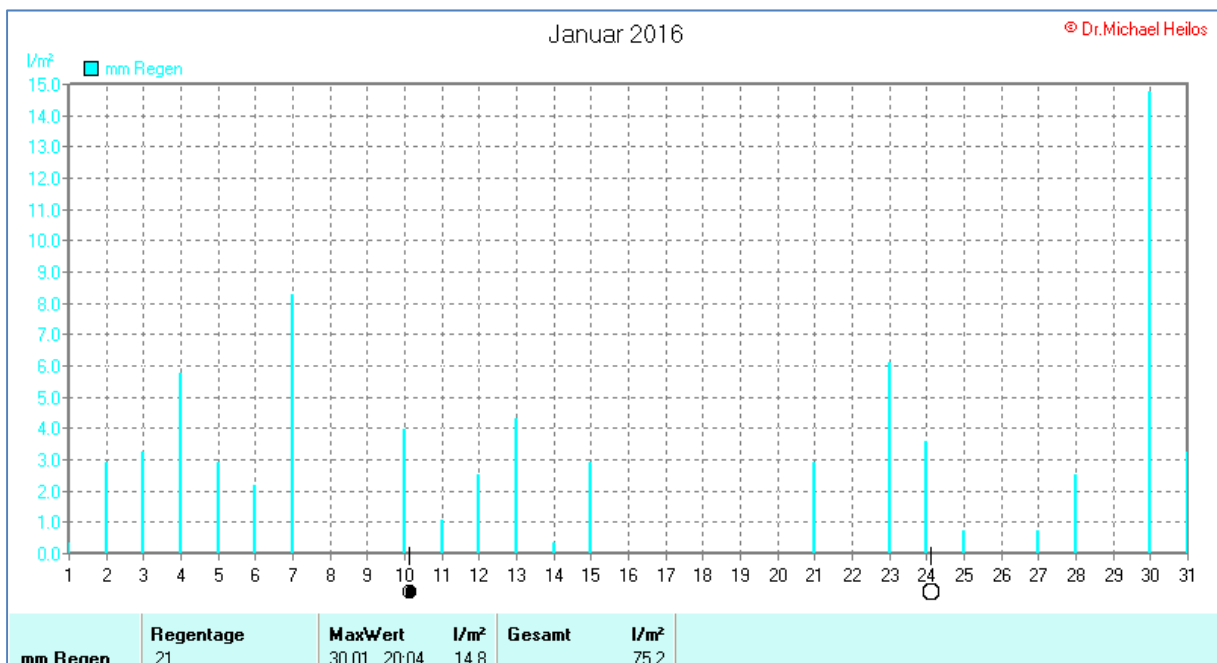
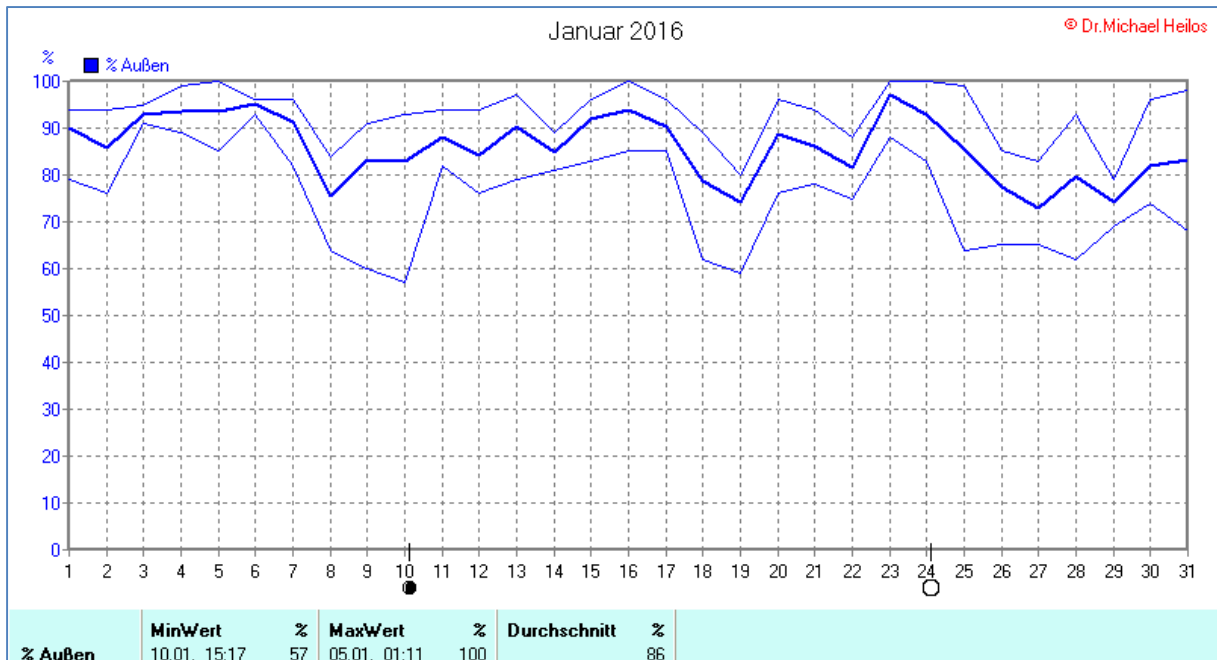
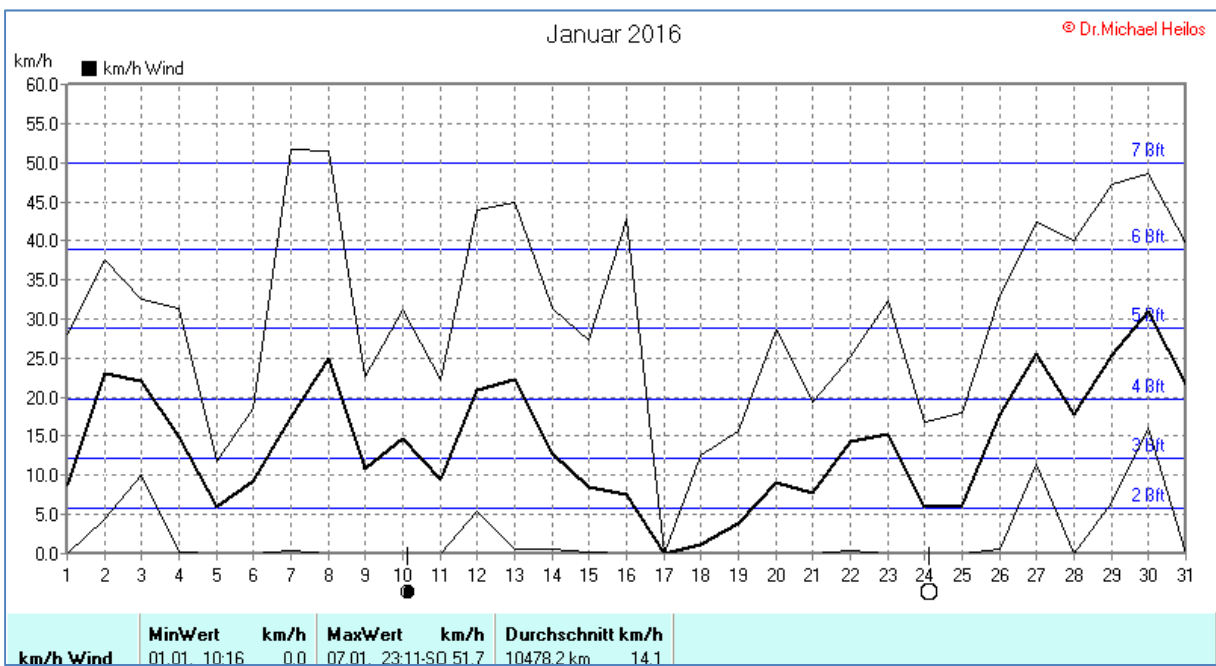
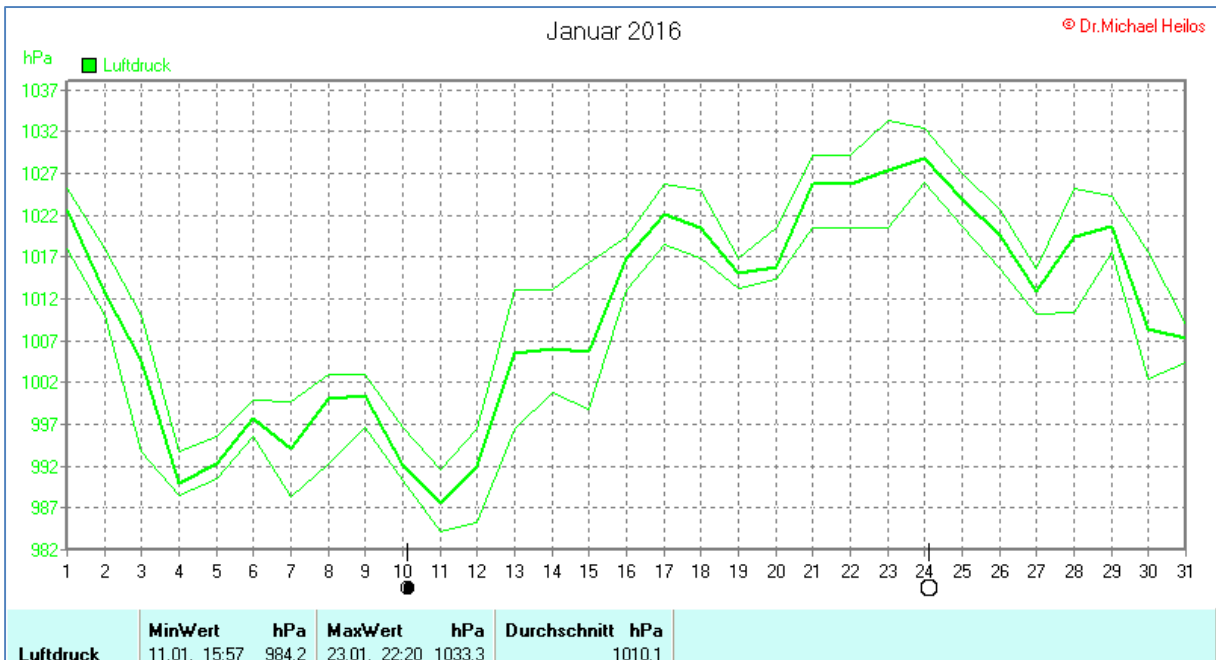


Wettertabelle und Grafiken Januar 2016 Station Borchten

Wetterdaten Januar 2016 Station Borchten							
© Dr.Michael Heilos							
Meßgröße	Minimum	Zeit	Datum	Maximum	Zeit	Datum	Durchschnitt
Temperatur	-9,7 °C	08:16	19.01.2016	14,1 °C	14:51	25.01.2016	3,3 °C
Luftfeuchte	57 %	15:17	10.01.2016	100 %	01:11	05.01.2016	86 %
Luftdruck	984,2 hPa	15:57	11.01.2016	1033,3 hPa	22:20	23.01.2016	1010,1 hPa
Wind km/h				51,7 km/h	23:11	07.01.2016	14,1 km/h
Wind °				O-SO	23:11	07.01.2016	O-SO
Regen l/m ²				14,8 l/m ²	20:04	30.01.2016	#75,240 l/m ²
Evapotransp.							#10,641 l/m ²
Sonne h				6:51 h	16:27	19.01.2016	#54:50 h

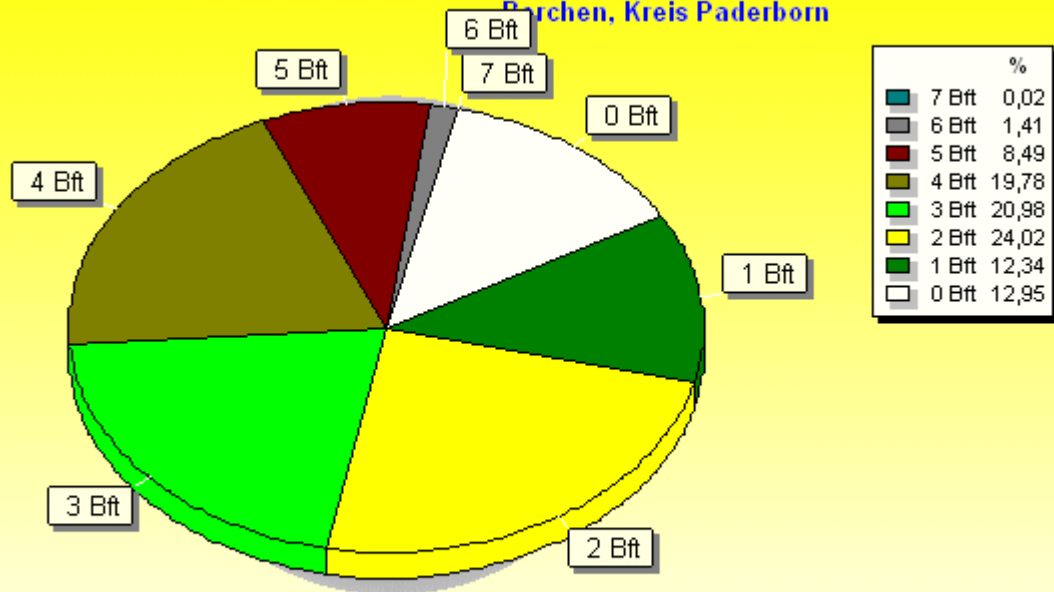






Verteilung Windstärke Januar 2016

Borchen, Kreis Paderborn

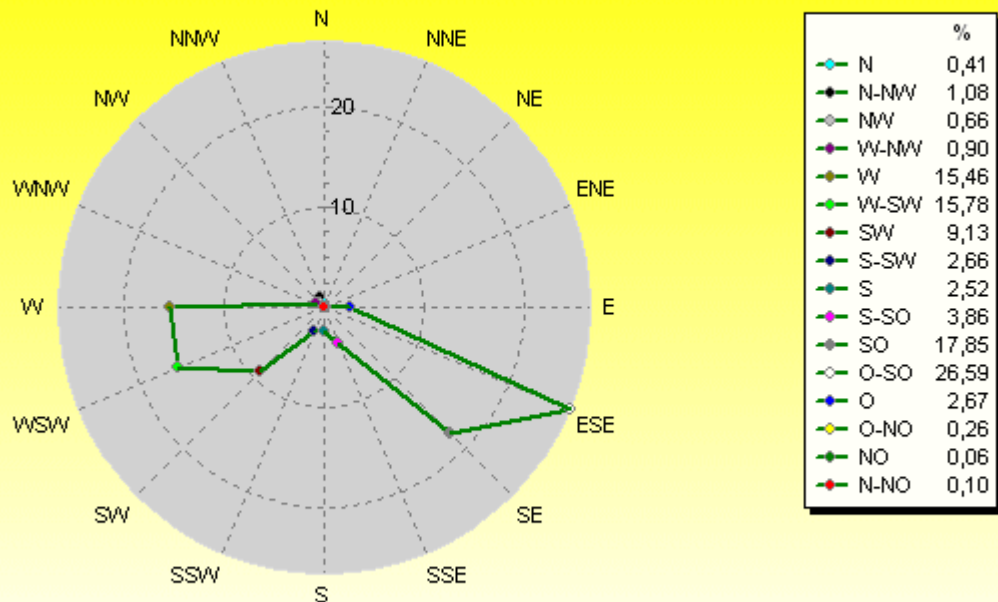


8937 Werte - Ø 14,1km/h - Max. 51,7km/h - 10478.2 km

© WzWin32 - © Dr.Michael Heilos - Borchen

Verteilung Windrichtung Januar 2016

Borchen, Kreis Paderborn



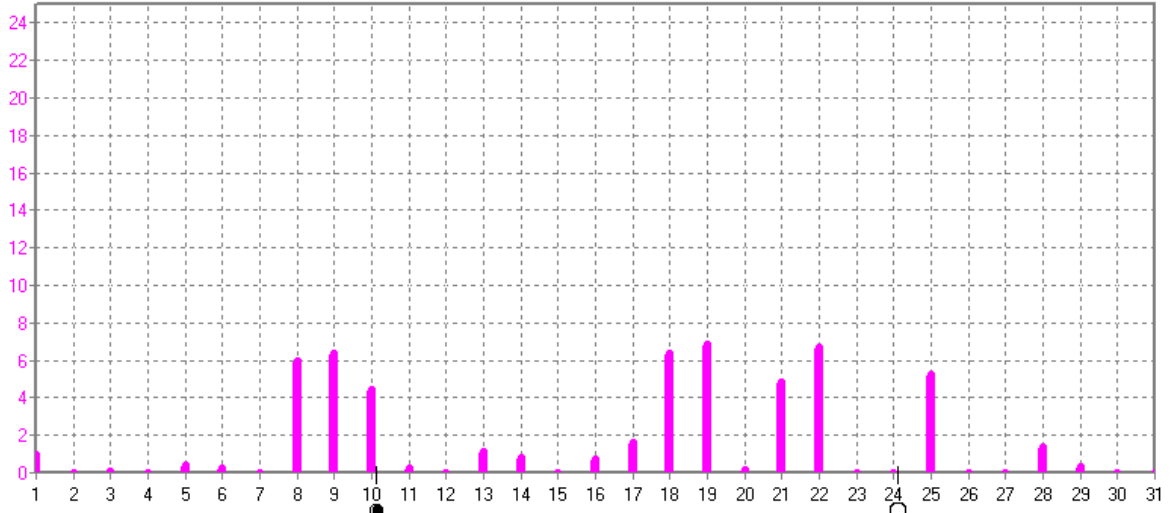
7780 / 1157 Werte -> 12.9% Windstille - Ø 14,1km/h - Max. 51,7km/h - 10478.2 km

© WzWin32 - © Dr.Michael Heilos - Borchen

Januar 2016

© Dr. Michael Heilos

h ■ h Sonnensch.



h Sonnensch.	MaxWert	h	Durchschnitt	h
	19.01. 16:27	6.85	54:50 h	2